



Overlook Views

your neighborhood newsletter

Vol 6 No 1

May/June 2009

Overlook Neighborhood Association, Portland Oregon
www.overlookneighborhood.org

HOWDY NEIGHBOR!

by Michelle Thompson

Welcome Spring 2009 and the Return of the Neighbors! Have you stopped to take notice of all your neighbors' shining faces lately? Everyone is out and about in the later light doing the things that make Overlook such a special part of Portland.

Your neighborhood association Board and their busy committees have met over the fall and winter since the Board elections to plan fun events for the rest of us for this coming year, as well as to keep tabs on events around the city that will impact Overlook.

We've also spent some time considering what exactly, if anything, the Board should advocate for. While this conversation is still ongoing, I noticed that several of us are new to neighborhood participation and that all of us are just 'regular' people who wanted to be involved in making and keeping Overlook a wonderful place to live and work.

If you have an interest, now is an excellent time to act. It's actually easier than you might think!



All you really need to do to get started is come to a General Meeting. In fact, there's one coming up shortly and we'd love to see you there April 21. Every third Tuesday of the month at 7pm you will find your neighbors at Kaiser Town Hall on Interstate Avenue, chatting about the things that are going on around Overlook, and new projects that (here's the secret) are driven by the interest and passion of our neighbors.

Like trees? Cynthia Sulaski has orchestrated the planting of nearly 700 trees in Overlook, just because she took an interest. I've always enjoyed reading the Overlook Views. There was a need, so I made a call and now coordinate its publication. Third-generation resident Matt Scoggin wanted to include new residents in OKNA, so he created a Welcoming and Membership Committee.

Your talents can directly impact your community. Make the date, and join us **Tuesday, April 21st at 7pm**. See you there!

Gratitude

A big thank you goes out to **Daimler Trucks North America** who recently agreed to fund *Overlook Views* for another year.

Daimler Trucks employee **Kim Jarmer** deserves special mention for her help in getting this year's funding. Daimler Trucks has generously funded the newsletter over the past five years, and we really appreciate their continued support.



This contribution allows us to continue printing six newsletters over the next year to keep the Overlook neighborhood and surrounding area informed about what future projects are proposed for the neighborhood, along with information for how we can all become involved in helping to shape our future; educating us about local history (a recent issue included an article on the early history of Swan Island); and informed of upcoming social events. Neighborhood volunteers deliver each issue to 3000 households in the Overlook Neighborhood, reaching around 8,000 people with each issue!

Thank you Daimler Trucks North America for your generous contribution and support of the Overlook Neighborhood!

Thank you to Board member **Steve Lanigan** for coordinating this important donation!

Sunday Parkways 2009

by Janis McDonald

In June 2008, the City of Portland held the first Sunday Parkways, along 6 miles of streets in North Portland and the Overlook neighborhood. The event was a huge success with 15,000 participants and 250 volunteers: People smiled from ear to ear. Children pedaled on their own bikes. Volunteers waved and cheered. When the day was done, people wanted more!

The City of Portland, Kaiser Permanente and ORbike are hosting three Sunday Parkways in 2009 – with a new route for North Portland. On **June 21, from 9am-4pm**, people will take to the streets to celebrate community, health and fun. A longer 7.5 mile route will connect Arbor Lodge, Peninsula and Kenton Parks.

Last year's loop south through Boise and most of the Overlook neighborhood has been eliminated due to the narrow Failing and Going Overpasses. North Ainsworth will be the revised crossing over I-5 and a Kenton Loop has been added. The streets will be open for people to walk, bike, run and roll, and the parks will host entertainment, activities and food.

The City is looking for volunteers, sponsorships, entertainment and activity ideas. We will need over 400 volunteers for each event! For more details on volunteer opportunities or to register as a volunteer go to www.GettingAroundPortland.org and click on Sunday Parkways.



Other Sunday Parkways:

Northeast Portland — July 19

Southeast Portland — August 16

For more information or to share your ideas please contact Janis McDonald at janis.mcdonald@pdxtrans.org or 503-823-5358.

Overlook Neighborhood Clean-Up Day

Saturday April 25 10:00am – 12:00pm

Here's a great way to honor Earth Day and do a quick bit for everyone's benefit. Alan and his crew have got this down to an art and plan to clean up Going, the Going Parklet and much more. Bring your camera to document graffiti and enjoy snacks at midday.

Where: North Going Street — Meet with your neighbors at the North end of the Concord Street overpass!

Bring leather gloves and wear heavy shoes or boots.

Refreshments will be provided.

Contact: **Alan Cranna** at 503.285.7944 or email him: ascran3@hotmail.com



City of Portland Bureau of
Planning and Sustainability
Sam Adams, Mayor | Susan Anderson, Director



Metro

Happening in the Neighborhood

Business in Overlook



Our neighborhood businesses are part of what makes living in Overlook so wonderful. Take a moment to find out what they have to offer...

Krakow Cafe & Pub's enhanced menu includes home-made pierogis & soups (Hungarian Mushroom), bagels and (salmon) lox with artichoke & cream spread, sauteed kielbasa, bratwurst. Open Mon-Th until 8pm, Fri-Sat until 8:30pm & Sun 5:30pm. 3990 N. Interstate.

Overlook resident, **Dr. Mona Bhalla** (family practice Naturopathic Physician) has moved her practice closer to home to join Knott Street Health Center, a full-service natural health center located in a beautifully renovated historic home @ 443 NE Knott Street (between MLK & 7th). 503.282.5350 www.doctormona.com

Atomic Pizza is now serving! Neighbor Jenna Forzley & husband Bill offer hand-tossed gourmet pizza & salads on site & to go with beer & wine service & outdoor seating coming soon. 2150 N Killingsworth 503.285.5490

Overlook Collaborative Preschool is a Reggio Emilia inspired, vegan/vegetarian and eco-friendly school in the Overlook neighborhood. School hours M-F, 8:30am - 12:30pm. Lead teacher and owner, Erin Sekulic has 14 years of teaching experience. 503.477.4455 www.overlookpreschool.com

Put a Spring in your step with **Exodus Spa's** Chocolate Pedicure and Fresh Strawberry Manicure spa treatments! Chocolate dipped strawberries and champagne are the perfect accompaniment. Book online at www.exodusspa.com or call 503.288.3110

Don't miss **Ainsworth Drug & Gifts** wine and specialty food tastings on the last Friday of every month. April 24th, May 29th and the big BBQ on June 26th. Not your ordinary drug store! 4027 N Interstate Ave 503.282.0787

Yetti's offers a wide selection of beer and wine to enjoy at the bar, on the patio or to take home. Our seasonal menu includes small plates, panini and cocktails from the spirits list. 1914 N Killingsworth 503-954-3322 yettispdx.com

What's happening in your Overlook business? Please join our email list to speak directly to your neighbors and customers! views@overlookneighborhood.org

Friends of Overlook House Ice Cream Social

by Mary Ellen Baldauff

Last August 3rd, Overlook neighbors visited over bowls of ice cream sundaes at the Overlook House.

The ICS committee wants to thank our wonderful volunteers who contributed to the social's success.

Returning for the 3rd year, **KC Rawls** greeted all at the ice cream table with **John Koonce** and **Mat Thorburn** scooping the ice cream. Toppings were dispensed by **Nicole, Emilija, and Sadie Thorburn.**

The Silent Auction was successfully orchestrated by **Carol Cushman, Christine Quigley, Leslie Rawls, and Pat Hazlett...**

Our photographer was **Kevin Rawls** and **Carol and David Hult, Matt Scoggin** and other neighbors helped with the clean up at the end of the social.

Please mark your calendars for the next Ice Cream Social on **Sunday, August 2.**

This event benefits the programs of the Friends of Overlook House; read more about what they do at www.historicoverlookhouse.org

Please join us as a volunteer. Contact Carol Cushman 503.288.3888 CHCRail@aol.com or Mary Ellen Baldauff 503.288.1739 m.baldauff@comcast.net.



Dude, Where's My Liquor Store?

Progress on Prescott meant the demise of our conveniently located liquor store on Interstate Avenue. Many of you are missing Miss Chris and her friendly staff, but they haven't gone far!

The Portland King Blvd store has moved to 3532 NE MLK Jr. Blvd., that's just north of the corner of Fremont & MLK. (hint: there is a parking lot just north of their door, turn in the first driveway) Hours are the same: 11am-7pm Monday-Saturday and you can phone them at 503.493.3473.

Alternate nearby stores include the Kenton location at 8221 N Denver Ave, open 11am-7pm Monday-Saturday. Phone 503.285.1776 and the Lloyd Center

store at 1621 NE 9th Ave (off Broadway) open 11:30am-7:30pm Monday-Saturday. Phone 503.288.0961.



The Northwest Children's Theater Presents:

"THE MAGIC FOREST PLAYHOUSE" SUMMER CAMP!

Educate, entertain & enrich the life of your child!

Camp includes stories, crafts, games, music and a costumes presentation all in five fun-filled mornings!

The Overlook House

July 13th-17th

9:30 A.M. - 12:30 A.M.

Fee: \$40.00 per student

(discounted from \$100.00 c/o of the Overlook House & NWCT)

Age requirement: 4.5 - 6 years of age

Maximum number of students: 12

Deadline for sign-up: June 15

Checks are made out to The Overlook House, and mailed to 3839 N. Melrose Drive, Portland, OR 97227

Contact Carol D. Padden, Program Director, 503.823.3188 or email her at coordinator@HistoricOverlookHouse.org for more information.

Friends of the Overlook House
3839 N Melrose Drive
www.HistoricOverlookHouse.org

The Friends of the Overlook House Board meets on the 4th Tuesday of the month at 7 PM.

Overlook House News

by Carol Padden

The annual Overlook House Easter Egg Hunt was enjoyed by many of our smallest residents on April 11th!



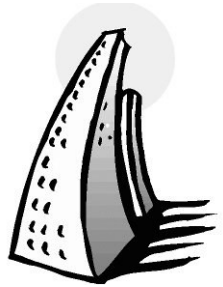
A big thank you to **Matt Gainer**, at the NE 7th FedEx Office, for his generous donation of a banner to help advertise this event!

Overlook resident and our Overlook House website designer, **Josh Armstrong**, was instrumental in working on the banner design.

Please check the Overlook House website www.HistoricOverlookHouse.org for upcoming classes and events. Contact Carol Padden, Program Director, at 503.823.3188 regarding any questions you may have.



Surf over to overlookneighborhood.org for more up to the minute news.



On the Grow!

Our New Neighbors

by Matt Scoggin

On February 12th, community members from all over Portland, including several OKNA Board members and myself, attended the Open House event for Patton Park Apartments, REACH Community Development's redevelopment project on Interstate Avenue (formerly the Crown Motel). It was nice to see the building almost complete; only the first-floor business space remains under construction. The building has a modern look inside and out, with amenities such as a meeting room, play room, computer room and laundry facilities.

Touring it during the Open House, I got a sense of the building's size –big!– and can easily imagine it filled with families. Patton Park Apartments has 54 units ranging in size from studios to three bedrooms. When full, the building will house approximately 80 adults and children. To me, those numbers translate directly into new possibilities, new connections and expansion for the Overlook Neighborhood Association. We are gaining almost 100 resi-



Essence T and her mother, Alysia, moved into Patton Park Apartments in early February. They like their new "cool neighbors" and enjoy living across the street from the park. Essence shows off her pretty pink bicycle in front of the art piece hanging in the building's entryway.

dents with just one new apartment building! This marks the beginning of a new phase for the Overlook neighborhood and its increasing population, as more buildings are erected (e.g.

the Prescott and Killingsworth developments). It is an exciting time to live in Overlook!

Recently, fellow OKNA Board member Cynthia Sulaski and I sat down with **Terry Brown** and **Matt Moor**, who work for REACH. They shared with us several of their programs — a financial savings program and various community projects. REACH projects are designed to fold affordable housing in throughout the city and Terry and Matt reinforced how important the sense of community is to them, the organization and ideally the tenants. REACH notes that this development marks a transition for a neighborhood faced with gentrification and in need of commercial activity serving local residents.

Building manager **Jess Shumway** will team up with Matt and members of the OKNA to distribute welcoming packets developed by the Membership Committee for all the new residents. We want to do what we can to extend a warm welcome to Overlook for all our new neighbors.

Later this Spring, we will have a small "meet and greet" at Patton Park Apartments for residents, OKNA Board members and other interested neighbors. Flyers and invites will be sent out when a date is set.

If you would like to help distribute the packets, have something to add to them, or would like to help organize the meet and greet, that would be fantastic. Please contact me at scogginm@gmail.com

More New Neighbors: Daybreak Cohousing in Overlook

by Elizabeth Warner

From the bluff above Adidas I can see the bright yellow building under construction poking up above the rooftops. Just a little. I've seen the Daybreak Cohousing sign up since the groundbreaking in May, and today I am determined to find out more about my future new neighbors. This is the first project of its kind to come to our neighborhood, and in the interest of being a friendly neighbor, I interviewed Kristin Wells, one of the community members, to find out more.

What is Cohousing?

The concept of Cohousing was conceived in Denmark and popularized in the states in the 1980's by architects Kathryn McCamant and Charles Durrett. According to the cohousing.org website, "Cohousing is a type of collaborative housing in which residents actively participate in the design and operation of their own neighborhoods.

Cohousing residents are consciously committed to living as a community. The physical design encourages both social contact and individual space. Private homes contain all the features of conventional homes, but residents also have access to extensive common facilities such as open space, courtyards, a playground and a common house. The concept involves six tenants:

- 1. Participatory process.** Future residents participate in the design of the community so that it meets their needs.
- 2. Neighborhood design.** The physical layout and orientation of the buildings (the site plan) encourage a sense of community.
- 3. Common facilities.** Common facilities are designed for daily use, are an integral part of

the community, and are always supplemental to the private residences.

4. Resident management. Residents manage their own cohousing communities, and also perform much of the work required to maintain the property. They participate in the preparation of common meals, and meet regularly to solve problems and develop policies for the community.

5. Non-hierarchical structure and decision-making. Leadership roles naturally exist in cohousing communities, however no one person (or persons) has authority over others.

6. No shared community economy. The community is not a source of income for its members.

How does Daybreak plan to interface with the neighborhood?

30 units of singles, families, and retirement-aged tenants will certainly help stimulate the local businesses in the neighborhood, especially along the Overlook Village Business District, along Killingsworth. The model of Cohousing attracts a certain kind of resident, necessarily interested and involved in the neighborhood. Once the project is completed our new



If this photo were color, you too could appreciate the bright yellow construction wrap on one of Daybreak's new buildings.

neighbors will be active members of the community, getting involved on a personal and group level.

It is *possible* that after the community gets established they will offer up the Common House for small community events such as boy scout and girl scout meetings on nights when it is not being used for group meals or other community member events. The common house is primarily for the use of the residents, providing guest quarters for their families & friends when they visit, and providing shared living space, like an extension of their individual units for group activities. A few nights a week an optional shared dinner will be prepared and served in the shared dining area, and other shared amenities will be available in the house as well, such as common sitting area, children's playroom and laundry, and also flex space that may develop into a workshop, exercise room, or art/crafts studio. Associate membership will also be offered to non-residents to facilitate the participation of the neighborhood in the Cohousing community.

Interview continues on Page 4

Swan Island...Jobs AND Wildlife!

by Lenny Anderson
Project Manager, Swan Island TMA

Twenty-two years ago I went to work for Boise Cascade R&D located along the Greenway Trail on Swan Island. I have had the good fortune of walking that path almost every day since. Canada geese, killdeer, white-crowned sparrows, juncos...not to mention good old "Joe Crow"... are among the other regulars along the Willamette.

Summer brings ospreys...I saw the first one this year just last Friday at the Lagoon boat launch (why doesn't that power pole have a platform for an osprey nest?). On rare occasions I've seen bald eagles...up close..., beaver, and even a family of river otters. Oh, and once above Going Street in the middle of a work day, I saw a red-tailed hawk with a fox squirrel in its talons!

But Swan Island you say is an industrial area! What's with all the wildlife? Well, the truth is that it's home to both. Swan Island has more than 200 businesses where more than 10,000 people come to work every day...many of them from nearby North and Northeast Portland. Daimler Trucks North America (formerly Freightliner LLC) is the granddaddy of them all with over 3,000 employees at their North American headquarters and the Western Star Truck Plant (set to close in June 2010 with production relocating to Mexico). So far corporate

headquarters, engineering, and R & D are staying put.

But that is not the whole story. UPS is doubling the capacity of their primary Portland regional hub, Vigor Industrial (formerly Cascade General) is building barges in a joint venture with Oregon Iron Works, and the Kroger Swan Island Dairy is producing milk products for all Kroger/Fred Meyer stores in the Northwest. And so on...



Now back to nature... Today Swan Island includes a mile of North Portland Willamette Greenway Trail from the Ash Grove Cement dock to the far northwest end of Daimler's parking lot.

And better access is on the way. This year Portland's Bureau of Transportation will conduct a multi-million dollar seismic upgrade to the Going Street railroad viaduct that will widen the sidewalk and add a crash barrier between it and the traffic lanes. Also coming this year are some additions to the Greenway Trail between its current terminus at the small park-

ing lot on Channel Avenue and the boat launch at the Lagoon. Last of all, it looks like work (design, permits, etc.) will get underway on the Waud Bluff Trail to connect the north end of Swan Island with the University Park and Arbor Lodge neighborhoods.

Learn more about the North Portland Willamette Greenway Trail and the vision shared by North Portland residents for a Trail "from the Esplanade to the Columbia River" at www.npGreenway.org. Sign up to help make it happen.

Meanwhile, bike or walk down "Going to the River" (the Going Street sidewalk) from Interstate Avenue to check out the Trail and beach adjacent to the Swan Island Pump Station. Or catch a # 72 Killingsworth bus to Anchor Street. Weekends are best to enjoy peace and quiet.

Check it out and, if you can, help out with keeping this route in good shape. On Saturday, April 25 (10 am to noon), join your Overlook neighbors and a few bike commuters to Swan Island, to pick up litter, cut back blackberries and generally tidy up "Going to the River." Then take the afternoon off to enjoy Swan Island's beach.

Welcome Lenny, who joins us each issue to open our eyes to the recreation, work and other possibilities on Swan Island. Learn more about North/Northeast PDX TNT... Trip Not Taken at swanislandtma.org



Market Returns in May!

by Erin McGovney
IFM Board Chair

Can you believe the Interstate Farmers Market is turning 5 this year?!

The IFM Board could not be more thrilled about the coming of spring and the '09 market season. During the off-season, the Board has been hard at work positioning the market for success: surveying our customers and vendors, pouring over budgets, discussing special events and recruiting the best mix of vendors the market has ever had.

Eamon Molloy, long-time manager of the Hillsdale Farmers Market takes over Market Man-

ager duties this season. We are pleased and fortunate to have Eamon and his wealth of experience managing successful markets as we enter our fifth season.

Join us in welcoming many new and returning vendors including Grand Central Baking, J & K Growers and many more, including Market stalwart Deep Roots Farm, who returns with their wide selection of organically grown produce, as well as Unger Farms and their luscious berries.

It's been a busy few months but the market is stronger than ever and we can't wait to see you all again for the first opening bell!

Wednesdays - 3pm to 7pm
May 20th through September 30th.

3550 N. Fremont St., next to Overlook Park on the Max Yellow Line.

Located Across from the Kaiser Permanente Interstate Campus.

For more information, call 971-344-0115.

Volunteers Still Needed; Join Now!

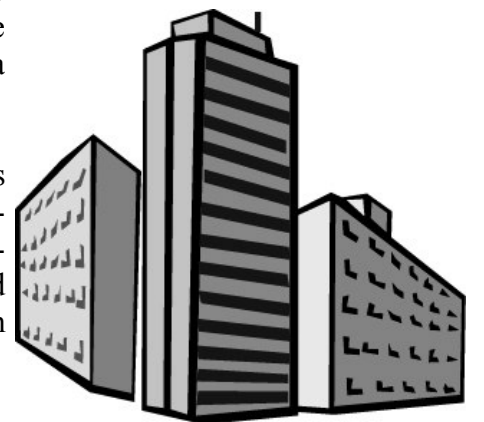
Construction? What Construction?

by Tom Kilbane

The down-turn in the real estate market and the credit crunch has stalled two full-block developments on North Interstate Avenue.

Killingsworth Station, a mixed-use residential and retail project planned for the NE corner of N Killingsworth St. and Interstate, and The Prescott, a mixed-use residential and retail project slated for the SE corner of N Prescott and N Interstate Ave., have come to a halt.

Developers for both projects are unable to find construction financing.



week near the middle of the month. Dates and locations are listed regularly on this website (<http://daybreakcohousing.org>). You also can ask to be put on their mailing list for e-mail reminders of dates and locations.

There are also two events scheduled in June: The first is an Open House on June 6th, and the second is the National Cohousing Conference, and Kristin Wells will be the Daybreak Representative at the conference. You can also check out Kristin's construction blog at <http://www.daybreakconstruction.blogspot.com>

Daybreak Cohousing continued from Page 3

What is Associate Membership?

Daybreak is interested in offering Associate membership to interested neighborhood members. This would mean that for a membership fee, neighbors could participate in the shared meals, common facilities, common house workshops, daycare, etc. This is a very new idea and anyone interested should contact Sterling Newberry at info@daybreakcohousing.com.

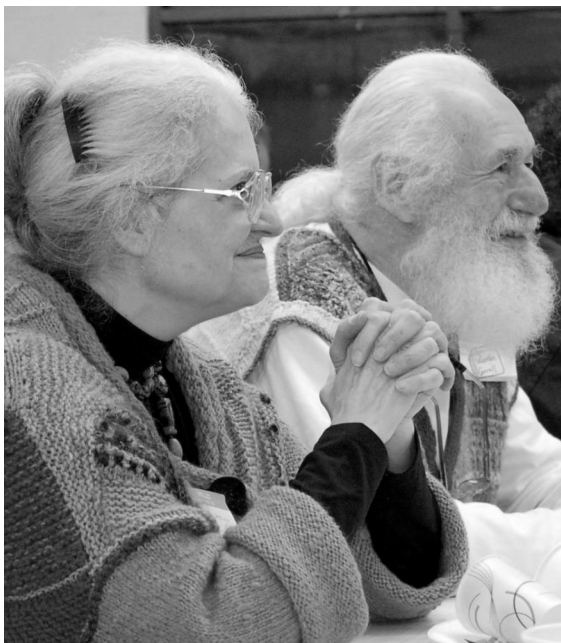
How can people interested in joining the Cohousing Community get more information?

The project is slated for completion in fall 2009, and the community ranges in age from 6 months to 70 years old. They are actively seeking new community members and invite anyone interested to attend the informal socials to get to know them and learn more about the community. Socials are scheduled twice a month in public and private settings, usually the first Sunday of the month and another day of the



As everyone knows, the newspaper industry is under a lot of pressure lately so it should be considered a minor miracle that the Overlook Neighborhood has its own printed neighborhood newspaper. We've become accustomed to regular updates on the goings-on around the neighborhood through the bi-monthly delivery of the *Overlook Views*.

And to a very large extent, we have two people to thank for this; **Warren and Melisa Cassell**.



Warren and Melisa took on the task of editing and publishing the newsletter back in 2004 and have done a phenomenal amount of work since then, doing everything from writing, editing, photographing, layout and printing. Whatever it took to get the paper on the street.

Melisa's hand could always be seen in the more creative aspects of the Views while Warren took on the tougher editorial assignments.

You may not have always agreed with Warren's position on the issues of the day, but he gave us the opportunity to be informed and to form our own opinions and, his fervent wish, to engage with our neighbors in discussion or, better yet, action to improve our community.

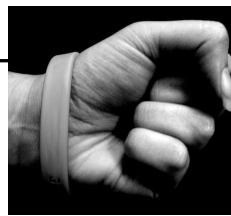
On behalf of the Overlook Neighborhood Association members, the OKNA Board thanks Warren and Melisa for their service to the neighborhood. They walk the talk and represent the best of Portland citizenship.

Calendar items, Business listings, upcoming events, corrections and requests for future issues of *Overlook Views* can be submitted to Michelle via email: views@overlookneighborhood.org

Item: At the last General Meeting, safety concerns were raised about the bridge area at N Concord & Going. Mark Wells will make use of the CPTED inspection program and report back to us. If you can't make the next meeting, email the Board with your questions.

Live Safe

Overlook residents will be happy to know that we have neighbor **Mark Wells** backing us up as the new Neighborhood Crime Prevention Coordinator under the Office of Neighborhood Involvement.



Mark keeps a desk in the Kenton Community Policing Office, but you can usually find him out on the streets looking out for our best interests. At our last two General Meetings, Mark has brought up some important ways we can protect ourselves and each other. With budget cuts a fact of life, and coming precinct changes, it's more important than ever that we do our part to protect ourselves and our neighborhood.



Lately, car prowls and petty break-ins are on his mind. Mark contributed the following article.

Car Prowls

A "car prowling" is technically the unlawful entry into a motor vehicle and is in itself a crime. Usually this crime is compounded by a host of additional crimes such as theft of the belongings inside, theft of the vehicle, and criminal mischief or damage to the vehicle.

In North Portland alone there were 796 reported cases of theft from a vehicle in 2008, and there has been a continual increase in this type of crime. Compound these statistics with the downward turn in the economy, and everyone needs to be aware of this crime and take proactive steps to prevent or minimize becoming a victim of a car prowling.

Websites We Love

Sometimes, curiosity gets the best of us. A new feature on the Portland Police Bureau's website is one that you might like too.

CrimeReports.com

You can now view 9-1-1 calls in Portland on a map through a link to CrimeReports.com. The map is updated daily to show the block location of calls that came into the 9-1-1 dispatch center for the Portland Police Bureau.

PortlandMaps.com

It seems that every time I check Portland-Maps.com, I find some new feature has been added. If you haven't looked up your property there lately, have a surf over to see what's happening.

Michelle

Here are some basic preventative steps you can take:

- ▶ Always roll up the windows and lock your car, even if it's in front of your home.
- ▶ **Never leave valuables in plain view**, even if your car is locked. This is the simplest and most effective measure one can take. Put valuables in the trunk and try to do this prior to parking your car in a public place.
- ▶ Park in busy, well-lighted areas.
- ▶ Place your vehicle's registration and insurance information in the trunk and out of sight.

Mark reminds us: **REPORT IT!**

Staffing and budget cutting numbers are influenced by our calls! If we do not report minor incidents, it's like they never happened.

For additional information and preventative ideas and tools please see: <http://www.portlandonline.com/police/index.cfm?c=29869&a=31554>

Reach Mark Wells by email at mark.wells@ci.portland.or.us or phone 503.823.4098



Another preventative step is to participate in the following program sponsored by the Portland Police Bureau:

Stop Thief Vehicle Placard

The "Stop Thief" Vehicle Placard is a newly adopted program of the Portland Police Bureau. This education program is designed to combat car prowls by reminding vehicle owners to remove valuable items (bags, purses, briefcases, money/change, laptops, sunglasses, radar detectors, IPOD's, GPS, etc.) from their cars.

True story, Mark Wells tells us people leave laptops in the car "all the time."

Car prowlers will potentially learn that vehicles displaying this placard belong to owners who have been educated on car prowling prevention techniques. Keep the inside of your vehicle in "showroom clean" condition.

Stop Thief placards can be obtained at any of the Portland Police Precincts.

Greenacres: parks, open spaces & other green things

We Did It Again!

by Cynthia Sulaski

Volunteers are really at the heart of making our annual tree planting a success and this year's was no different from the last nine. People from North Portland as well as from other parts of the metropolitan area came out on January 31st and pitched in to plant 117 parking strip and yard trees in Overlook and Arbor Lodge.

For the first – but not last – time, we partnered with Arbor Lodge, making the joint venture more efficient and expansive at the same time. Having coordinated Arbor Lodge's plantings for seven years, **Kria Lacher** ("Portland's Green Realtor") was pleased with the outcome of our working together and thought it "was a successful and fun planting." She was especially delighted that we planted trees on many



The planning committee celebrates a successful tree planting at Jenna's new Atomic Pizza restaurant on Killingsworth. From left to right are: Matt Scoggin, Jenna Forzley, Bea Holzapfel, Dawn Barry-Griffin, Cynthia Sulaski and Pat Collins.

We're Almost There - "Friends of Patton Park"

by Cynthia Sulaski

Spurred on by the excitement of the Patton Park Apartments opening (see Matt Scoggin's article on Page 3), I am planning to form a "Friends of Patton Park" group.

As you know, Patton Park was recently renovated with funds from the Interstate Corridor Urban Renewal Area. What is missing is a group of stewards dedicated to our little gem of a neighborhood park so that it may flourish for generations to come. I worked with staff from IFCC, Portland Parks and Trillium Charter School to plan the celebration of Patton Park's reopening (after it was closed for over a year) last summer. With the completion of the Patton

corner lots and busy streets, like Greeley, Denver, Alberta and Rosa Parks Boulevard.

I was fortunate this year to work with a wonderful group of neighbors who helped get the word out about the planting. You may have talked to them as they walked each street in Overlook hand delivering notices to homeowners without trees. Committee members included: **Dawn Barry-Griffin, Pat Collins, Jane Finch-Howell, Hideko Forzley, Jenna Forzley, B. Holzapfel, Karen Schrader, and Matt Scoggin.**

A virtual round of applause goes out to **Jay Bankhead**, administrator for the **Kaiser Permanente Interstate campus**, for approving our use of Town Hall as our staging site. Besides getting a wonderful place to meet in the morning and to enjoy lunch after the planting, we were helped by **Anna**, a Kaiser catering employee, and serenaded by **Steve Cheseborough**, a blues musician. We thank Kaiser for their consistent support for 10 years. We are also grateful to **Richard and Anne DeWolf**, owners of **Arciform**, for contributing money and use of their company truck with which we distributed trees and to **New Seasons Market** for donating yummy food.

A shout out goes to these generous businesses that donated the many raffle gifts that some fortunate participants won:

- Beaterville Restaurant
- Blend Coffee House
- Bridge Boro Glass Art
- DiPrima Dolci Italian Bakery
- Exodus Salon
- Fire on the Mountain Restaurant
- Friends Bath & More
- Harbor Freight
- Krakow Café & Pub
- Naked Sheep
- Pause Restaurant
- Roots Garden Supply
- Roux Restaurant
- The Alibi Restaurant and Bar
- Zoom Baby Care

Park Apartments, we now have another critical stakeholder group who can literally watch over the park.

Once the rest of our new neighbors move in, I will participate in the "meet and greet" opportunity (described in Matt's article) and invite them to join the Friends group. I will then schedule the first meeting some time this summer and will make sure the date is publicized in the "Overlook Views" and on our website.

If you would like to take part in this new opportunity to make a difference in Overlook, call 503.249.7728 or email me at csulaski@comcast.net

David and Kitty Goodyke wanted to plant trees within a year of moving into their new home in Overlook. They admitted to being "picky" about trees and had decided on two American Yellowwood trees for their front parking strip. So, they were thrilled to discover that Overlook would be partnering with Friends of Trees (FOT) in a January planting and had discounted the price of each tree to \$15 from donations. Happily, FOT had the Yellowwood



David, Kitty and Sylvia Goodyke admire their newly planted American Yellowwood

on the list of available trees for their size strip. And for good measure, they also bought three Ginkgo trees for their side yard. Besides for reasons of beauty, home value enhancement, shade and wildlife habitat, David and Kitty believe that it's important to plant trees for future generations—for their daughter and for the generations to follow. They're all smiles now waiting for their new trees to bud out and begin to grow...and grow...and grow.

That's it for this year—we'll do it again in 2010!

To see more photos of the tree planting, please go to our website:

www.overlookneighborhood.org

Friends of Trees Benefit BBQ

Help us celebrate Earth Day and Arbor Month by grabbing your lunch at a New Seasons Market on April 25 and 26.



From noon to 4 p.m. Friends of Trees volunteers will be working alongside New Seasons Market employees to keep you nourished. All proceeds from this event will be donated to Friends of Trees.

We are also looking for about 40 volunteers to help us make this event a success. If you are interested in helping, please contact Greg Tudor at 503-282-8846 ext. 12.

Participating New Seasons Markets include our neighborhood location:

Arbor Lodge: 6400 N Interstate Avenue



The Year of the Vegetable

by Pat Collins



The spring garden shows declared this the "Year of the Vegetable". No big surprise to all the locavores with front yard veggie patches in Portland. But whether you are a gardening newbie or an old hand here are some different ways to think about your urban farm and your neighborhood.

Mother's Day is just about a month away and many of us consider that the official date to get our tomatoes in the ground. If you haven't got your seedlings safely tucked on that warm spot on top of the fridge, you can still do a little planning and hit one of our local nurseries for starts or even dawdle until the Interstate Farmers market opens. Vendors always seem to have a swell selection of all kinds of vegetables for home gardeners.

There has never been a better time for producing your own food, the one bright spot in this dismal economy. And since many of us are despairing of some of the marginal additions to

our beds and borders who seemed to have finally swooned after the December storms why not expand your horizons and **plant eggplants** to hide the " gee, I hope it comes back" New Zealand flax? Or try **garden peas** in a pot to fill a hole and use up some of the spring prunings to train them on.



It's a year to think outside the standard patch to cover those gaping holes the snows left us.

Utilitarian is chic, so borrow a page from the English and plant directly in a bag of potting soil and let the squash, melons or pumpkins run wild. I lost a tree and have a VERY sunny terrace now so that's my plan. The potting soil's bag holds the water and warms up quickly. Never had room for the sprawlers before, but now I do and if the foliage doesn't cover up that bag, well I'm now a recessionista and trend setter! Come fall, empty the soil into an adjacent garden bed.

Then there is the question of what to do with all your bounty come summer? A couple of years ago a friend suggested we get together in the garden of a local bakery and do a trade. The

staff sold us coffee and croissants, we each got something someone else had, we attracted others who wanted to join in and to close the loop we would give up things in trade for whatever the bakery had to sell if someone had nothing to barter. I didn't have to grow plum tomatoes and I unloaded potatoes and raspberries and eggs for other treasures. I imagine some gardening moms out there could easily add this to the coffee klatches with other moms.

In fact why not expand the swapping to one of our local pubs gardens in the evening? A pint is just as negotiable as a pastry. And while we sit around eating, drinking and admiring each others produce how about seeing if someone loves to can those tomatoes, make the jam or dry the plums and trade those skills too. I never have enough figs to bother with making fig preserves but if you give me some of yours I'll give you a jar or two back. It's my grandmother's recipe.

The bottom line? Save some dough and make some new friends. You're going to the coffee shop or pub anyway.

Summer really is just around the corner.



Weekly Watering Number takes the guesswork out of lawn watering

by Jan O'Dell

Here's the scoop on lawns. Established turf requires an average of one inch of water a week to stay healthy. The trick is figuring out how much water the lawn is really getting, both from rainfall and from sprinklers. Most people just guess and run their sprinklers until it "feels like enough."

No more guessing how much to water

A group called the Regional Water Providers Consortium has taken the guesswork out of lawn watering. The Consortium offers a free public service called the Weekly Watering Number. This number accounts for current weather conditions and shows how much additional water you need to apply that week so your lawn gets its one-inch dose. You can also use the number to calculate how much to water your trees, shrubs and vegetables. To get the number and learn how to apply it to your landscape and garden, simply go to the Consortium's website, www.conserveh2o.org. You can also sign up to receive the number every week by e-mail.

The Weekly Watering Number is even calculated by region. Sometimes more rain falls in the south part of the metro area than falls in the north. This means that folks in Overlook might be able to water their lawns a bit less that week than those in Oregon City.

Measuring your sprinkler output

To use the Weekly Watering Number, you need to know how much water your sprinkler or irrigation system is putting on the lawn over a set period of time. The best way to do this is to get a couple of watering gauges. You can get them for free beginning May 1 – while supplies last – through the Regional Water Providers Consortium. Call 503-823-5356, or send an e-mail to RWPCinfo@water.ci.portland.or.us to request the free watering gauges.

Putting it all together

Once you know your sprinkler-volume output, it's easy. If the Weekly Watering Number for your area indicates that an additional half-inch of water is needed for the week, and your sprin-

Pittman HydroPark

by Darcy Cronin
Facilities Services Specialist
Portland Water Bureau

You may or may not have heard about Overlook's newest pocket park already, but the neighborhood rumors are true, Pittman Addition HydroPark is in the midst of being created this spring after a winter of planning.

The site is located on the north side of the Concord Street pedestrian overpass along Going Court behind the sound wall near the Plaid Pantry at the intersection of Interstate Avenue and Going Street.

There will be several improvements to the site made over the next few months, including new native plantings, a path, picnic tables, benches,

a bike rack, trash/recycling can, doggy bag station, and signs. In the longer term community members are very energized about installing sculptures on a rotating basis, hosting small scale neighborhood gatherings, and simply using the site as a little urban oasis.

Mark your calendar for a few upcoming community events:

Neighborhood Planting at Pittman Addition
Saturday May 9th, 9:00 a.m. - Noon

Pruning Workshop at Pittman Addition
Monday May 11th, 6:00 p.m. - 7:30 p.m.

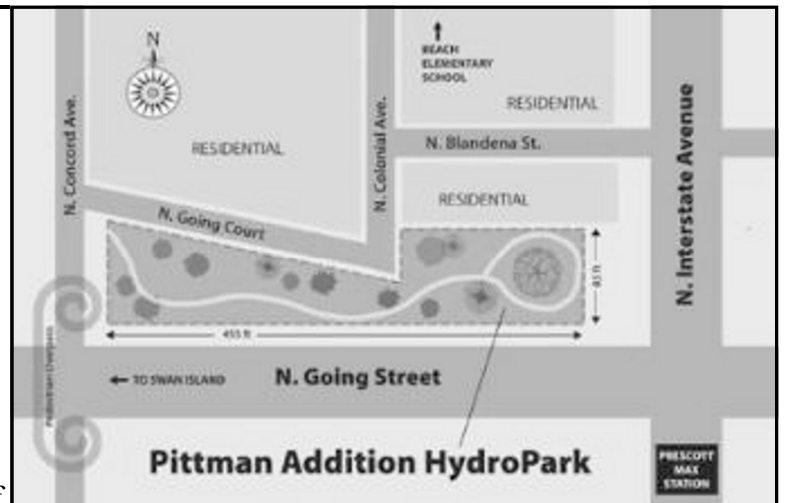
Pruning Workshop at Pittman Addition
Monday May 18th, 6:00 p.m. - 7:30 p.m.

Visit the project web site for more event details and updates:

www.portlandonline.com/water/pittman_addition

There is also more background information, including notes from planning meetings and an intro presentation.

Lastly, stay posted for the opening celebration!





By popular demand

by Michelle Thompson

By now, you've noticed some changes in the Overlook Views. The OKNA Board and members asked for some, readers/neighbors have asked for others, and we're asking you for more! **In what ways can the *Overlook Views* newsletter best serve you?**

Directly below, you'll notice some key phone numbers to have handy; let us know if there are

others you'd like to keep on hand.

We've also added graphic calendars for you to clip out; I paperclip mine to my wall calendar when I'm too lazy to write them all out.

Take note of a page-designation on the calendars that will point you to more details for the event, e.g., P4 means go to Page 4 for more information.

The OKNA Newsletter Committee would like to acknowledge and support our neighborhood businesses. As we explore a concept that the City of Portland is developing, called the 20

Minute Neighborhood, using the services and suppliers nearest to us has fresh appeal. Considering the current economic climate, your single purchase at a local business means more to the owner than ever before.

Finally, pass around a copy; Conventional wisdom holds that 1.5 people read each copy of a delivered free paper. Please make sure your household is doing its part to get **all** the use out of this *Overlook Views*!

Email me with the buzz, comments & requests: views@overlookneighborhood.org

Where to go? Who to call?

Overlook House
503.823.3188
3839 N. Melrose Drive
www.HistoricOverlookHouse.org

Kaiser Town Hall
Corner of Interstate and Overlook Blvd
General Meetings, 3rd Tuesday Monthly

Crime Prevention Coordinator
Mark Wells
503.823.4098

Police Non-emergency
503-823-3333
Report it!

Graffiti Hotline, 503-823-4824
Cell phone photos help!

City of Portland: Information and Referrals
503-823-4000
For referral to city services and bureaus.
8am to 5pm weekdays
www.portlandonline.com

Metro Recycling Information
234.3000
www.metro-region.org

TriMet: Public Transportation
503-238-RIDE
www.trimet.org

May 2009

Sunday	Monday	Tuesday	Wednesday	Thursday	Friday	Saturday
					1 Free Water Gauges! P7	2
3	4 Crafting, Knitting, Crochet forum 6:30-9 Overlook House Every Monday	5 OKNA Board Meeting 7-9pm Overlook House	6	7 "Bean Sprout" Story Hour 10:30-11:30 Overlook House Every Week	8	9
10	11 Crafting, Knitting, Crochet forum 6:30-9 Overlook House	12	13	14 "Bean Sprout" Story Hour 10:30-11:30 Overlook House	15	16
17	18 Penny's Puppet Shows 10am & 11am Overlook House	19 OKNA General Meeting 7-9pm Kaiser Town Hall	20 Interstate Farmers Market Opens! 3-7pm P4	21 "Bean Sprout" Story Hour 10:30-11:30 Overlook House	22	23
24	25 Crafting, Knitting, Crochet forum 6:30-9 Overlook House	26 Friends of the Over- look House Board Meeting 7pm-9pm P2	27 Interstate Farmers Market 3-7pm P4	28 "Bean Sprout" Story Hour 10:30-11:30 Overlook House	29	30
31						

June 2009

Sunday	Monday	Tuesday	Wednesday	Thursday	Friday	Saturday
	1 Crafting, Knitting, Crochet forum 6:30-9 Overlook House	2 OKNA Board Meeting 7-9pm Overlook House	3 Interstate Farmers Market 3-7pm P4	4 "Bean Sprout" Story Hour 10:30-11:30 Overlook House	5	6
7	8 Crafting, Knitting, Crochet forum 6:30-9 Overlook House	9 End of School! Ockley Green, Beach, Jefferson	10 Interstate Farmers Market 3-7pm P4	11 "Bean Sprout" Story Hour 10:30-11:30 Overlook House	12	13
14 Edward Gorey Garden Party 4-8 Overlook House	15 Registration due for Magic Forest Play- house Summer Camp P2	16 OKNA General Meeting 7-9pm Kaiser Town Hall	17 Interstate Farmers Market 3-7pm P4	18 "Bean Sprout" Story Hour 10:30-11:30 Overlook House	19	20
21 Sunday Parkways Event 9-4 P1	22 Crafting, Knitting, Crochet forum 6:30-9 Overlook House	23 Friends of the Over- look House Board Meeting 7pm-9pm P2	24 Interstate Farmers Market 3-7pm P4	25 "Bean Sprout" Story Hour 10:30-11:30 Overlook House	26	27
28	29 Crafting, Knitting, Crochet forum 6:30-9 Overlook House	30	July 1 Interstate Farmers Market 3-7pm P4	July 2	July 3	July 4 Celebrate! But don't burn down the bluff.

Stay Connected!

For up to the minute reminders about your neighborhood happenings, surf over to www.overlookneighborhood.org and enter your email address on the home page.

Reach the Neighborhood Association by mail:

OKNA
2209 N. Schofield St.
Portland, Or. 97217

OKNA BOARD OFFICERS

Chair: Claire Paris 503.998.4878
claireparis@comcast.net

Treasurer: Kent Hoddick 503.286.9803
hoddick@teleport.com

OVERLOOK VIEWS is published 6 times per year by the Overlook Neighborhood Association.

Newsletter Committee members collect and coordinate items of interest to the Overlook neighbors; thank you!

Alan Cranna, Carol Cushman, Kent Hoddick, Matt Scoggin, Cynthia Sulaski, Michelle Thompson, Elizabeth Warner & Zita Podany